

CS Telescopic Boom Crane Series



Greetings

Since established in 1997, CS Machinery Co., Ltd. has been engaged in developing, producing, and exporting its own truck mounted hydraulic boom cranes to many different countries, based on more than 28 years of distinct hydraulic technology under the company philosophy of the **BEST TALENT** / the **BEST TECHNOLOGY** / the **BEST QUALITY** along with Customer Satisfaction Management. CS Machinery is one of the top four crane manufacturers in Korea with strong confidence from customers at home and abroad. In the end, we will become a front runner, by leading customer satisfaction management, to create the living and working environment for the new century based on mutual confidence and advanced technology.

CS Machinery Co., LTD.



Tae Young Kim / President

Best
Quality

Best
Technology

Best
Talent



A MASTERPIECE OF MODERN TECHNOLOGY, DESIGNED TO ACHIEVE ULTRA-HIGH REACH WITH TREMENDOUS POWER

Customers have long been looking for a crane with a high-lift and super-power boom.

CS Machinery answers with this CSS telescopic boom series - the longest and highest power in its class. It reaches to max. 37.5 meters high and has max. 33.6 meters working radius, making it perfect for construction and material handling, which includes loading, transporting, unloading, feeding of cargoes, construction materials, other work pieces, etc. / raising signboards / installation of machineries or pipes / assistant of electricity works and other various fields of construction works in combination with transportation of work pieces, in order to create the customers' working environment more safely and conveniently.

For satisfying the users' ultra-high needs, as a Manufacturer and Seller of well-produced Boom Crane, an additional jib boom from 3 meters to 4 meters long or more can be optionally employed on the Boom Crane.

■ **Several safety features are standard, including...**

- Cross control system that is designed to allow the same control lever sequence on both side of the crane.
- Pilot-operated counter balance valves that are mounted directly on the derrick and extension cylinders.
- Winch reduction gear with brake.
- Slewing reduction with hydraulic brake.
- Multiple control valves with integral safety valve.
- Lifting angle indicator.
- Hook safety latch.
- Overwinding device.

■ **Optional Features are including...**

- Optional maneuvering system of top-seat provides operator with clear visibility for safe cargo handling.
- Additional jib boom of 3 meters long or more is provided for users' ultra-high needs.
- Additional winch system provides operators for speedy single-line work.
- Additional outrigger system, usually mounted on the rear side, can be provided for safe work.
- Several optional features if required for more comfortable and safe work.

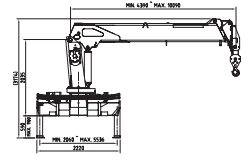


Medium Duty

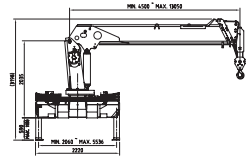
DESCRIPTION	UNITS	CSS 103	CSS 104	CSS 105	CSS 106	CSS 107	CSS 185	CSS 186
Lifting Capacity	ton-meter	16.8	16.5	16.3	16.0	14.3	18.6	18.0
Lifting Capacity / Outreach	kg/m	7000 / 2.0	7000 / 2.0	7000 / 2.0	7000 / 2.0	6700 / 2.0	8000 / 2.0	7600 / 2.0
		2580 / 6.0	2490 / 6.0	2440 / 6.0	2340 / 6.0	2170 / 6.0	2880 / 6.0	2580 / 6.0
		1670 / 9.0	1110 / 12.0	1070 / 12.0	1000 / 12.0	890 / 12.0	1330 / 12.0	1160 / 12.0
		1260 / 9.9	840 / 12.8	600 / 15.8	400 / 18.8	200 / 22.0	700 / 16.8	400 / 20.0
Working Radius	m	9.9	12.8	15.8	18.8	22.0	16.8	20.0
Max. Working Height	m	12.7	15.6	18.6	21.6	25.8	19.6	22.8
Rated Oil Flow Recommended	cc / rev	61						
Working Pressure	kg / cm ²	200						
Oil Tank Capacity	ℓ	145						
Shape Of Boom		Hexagonal box construction, 3 sections	Hexagonal box construction, 4 sections	Hexagonal box construction, 5 sections	Hexagonal box construction, 6 sections	Hexagonal box construction, 7 sections	Hexagonal box construction, 5 sections	Hexagonal box construction, 6 sections
Boom Length	m	Min.4.4~Max.10.1	Min.4.5~Max.13.1	Min.4.6~Max.16.0	Min.4.7~Max.19.0	Min.4.8~Max.22.3	Min.4.85~Max.17.05	Min.4.92~Max.20.17
Boom Extending Speed	m / sec	5.70 / 15	8.55 / 20	11.40 / 20	14.25 / 30	17.46 / 35	12.20 / 25	15.25 / 35
Boom Raising Speed	° / sec	0~78 / 10						
Slewing Angle	°	360° continuous						
Slewing Speed	r.p.m.	2.0						
Wire Rope	∅ × m	10 × 80	10 × 80	10 × 100	10 × 100	10 × 100	10 × 100	10 × 100
Hook Speed	m / min	15 (4fall lines)						
Winch Type		Hyd. motor driven, spur gear speed reduction with mechanical brake						
Single Line Pull	ton	1.5						
Slewing Reduction Gear Type		Hyd. motor driven, worm gear speed reduction with hydraulic brake						
Outrigger Span, Main	Ext m	5.53						
	Ret m	2.06						
Truck chassis, Recommended	GVW(ton)	10			15			
Optional feature		(1) Rear outrigger system (2) Additional winch system of 1.5 ton (3) Additional manual Jib Boom of 3.0 meters or more (4) Personal Basket (5) Top Seat Control (6) Several options if customers request for their comfortable and safe work (7) Hydraulic Pump						



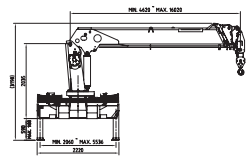
CSS 103



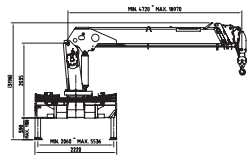
CSS 104



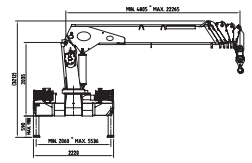
CSS 105



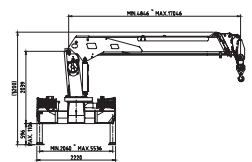
CSS 106



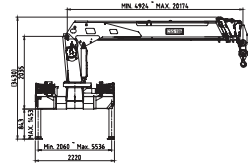
CSS 107



CSS 185



CSS 186



CSS103 TYPE RATED LOADS																		
BOOM RADIUS (m)		2.0	4.0	5.0	6.0	7.0	8.0	9.0	10.0	11.0	12.0	13.0	14.0	15.0	16.0	17.0	18.0	19.0
ALL	(kg)	7000	4110	3480 (4.2m)														
2ND	(kg)	6100	3600	3050	2580	2020	1870 (7.04m)											
3RD	(kg)		3330	2770	2410	2150	1900	1670	1260 (9.9m)									

CSS104 TYPE RATED LOADS																		
BOOM RADIUS (m)		2.0	4.0	5.0	6.0	7.0	8.0	9.0	10.0	11.0	12.0	13.0	14.0	15.0	16.0	17.0	18.0	19.0
ALL	(kg)	7000	4070	3310 (4.3m)														
2ND	(kg)	6200	3500	2940	2490	1970	1720 (7.1m)											
3RD	(kg)	2400	2400	2400	2290	2030	1790	1590	1150									
4TH	(kg)		2400	2400	2170	1890	1700	1520	1380	1240	1110	840 (12.8m)						

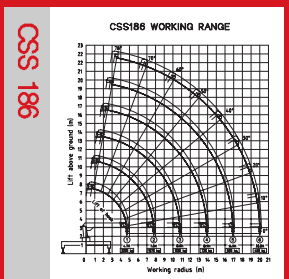
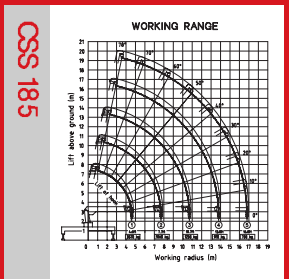
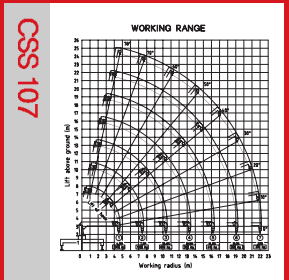
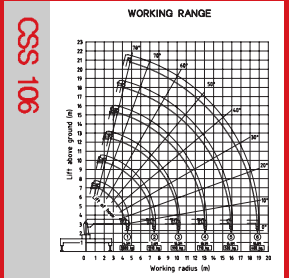
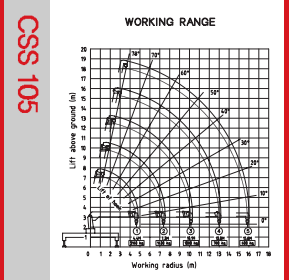
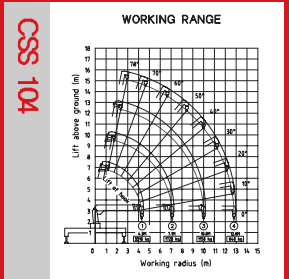
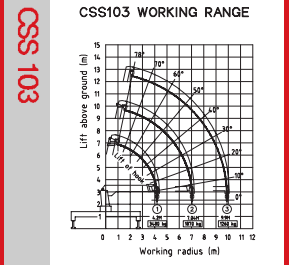
CSS105 TYPE RATED LOADS																		
BOOM RADIUS (m)		2.0	4.0	5.0	6.0	7.0	8.0	9.0	10.0	11.0	12.0	13.0	14.0	15.0	16.0	17.0	18.0	19.0
ALL	(kg)	7000	4060	3160 (4.4m)														
2ND	(kg)	6100	3450	2870	2440	2000	1630 (7.3m)											
3RD	(kg)	5000 (2.3m)	3170	2610	2250	1980	1730	1530	1220	1080 (10.1m)								
4TH	(kg)		2400	2400	2130	1850	1640	1460	1330	1210	1070	780						
5TH	(kg)		2400	2320	2040	1760	1560	1410	1260	1160	1060	970	880	790	600 (15.8m)			

CSS106 TYPE RATED LOADS																		
BOOM RADIUS (m)		2.0	4.0	5.0	6.0	7.0	8.0	9.0	10.0	11.0	12.0	13.0	14.0	15.0	16.0	17.0	18.0	19.0
ALL	(kg)	7000	3970	3020 (4.5m)														
2ND	(kg)	5180	3310	2730	2340	1810	1510 (7.4m)											
3RD	(kg)	4930 (2.3m)	3070	2540	2170	1880	1660	1450	1190	990 (10.2m)								
4TH	(kg)		2400	2370	2040	1780	1580	1410	1270	1130	1000	790	710 (13.1m)					
5TH	(kg)		2400	2300	1970	1710	1510	1340	1200	1100	1000	890	830	730	520 (15.9m)			
6TH	(kg)			2250	1920	1640	1440	1290	1160	1050	960	890	830	750	680	620	540	400 (18.8m)

CSS107 TYPE RATED LOADS																					
BOOM RADIUS (m)		2.0	4.0	5.0	7.0	8.0	10.0	11.0	12.0	13.0	14.0	15.0	16.0	17.0	19.0	20.0	21.0	22.0			
ALL	(kg)	6700	3880	2970 (4.5m)																	
2ND	(kg)	5200	3070	2520	1800	1380 (7.5m)															
3RD	(kg)	4600 (2.3m)	2830	2330	1600	1490	1110	880 (10.4m)													
4TH	(kg)		2760	2240	1600	1400	1110	1000	890	730	580 (13.3m)										
5TH	(kg)		2550	2190	1540	1340	1040	980	870	780	700	620	590	410 (16.2m)							
6TH	(kg)		2320 (4.5m)	2020	1480	1260	1010	910	820	750	680	620	570	510	350	280 (19.1m)					
7TH	(kg)			1980	1390	1240	960	890	780	720	650	590	540	510	420	370	330	200			

CSS185 TYPE RATED LOADS																		
BOOM RADIUS (m)		2.0	4.0	5.0	6.0	7.0	8.0	9.0	10.0	11.0	12.0	13.0	14.0	15.0	16.0	17.0	18.0	19.0
ALL	(kg)	8000	4770	3570 (4.6m)														
2ND	(kg)		4030	3880	2880	2460	1860 (7.7m)											
3RD	(kg)		3000	3040	2630	2340	2070	1860	1630	1250 (10.7m)								
4TH	(kg)		2400	2400	2400	2190	1950	1750	1600	1470	1330	1180	910 (13.8m)					
5TH	(kg)			2400	2330	2090	1850	1660	1520	1400	1280	1190	1100	1010	910	700 (16.8m)		

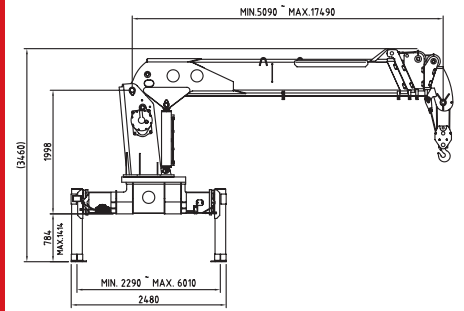
CSS186 TYPE RATED LOADS																			
BOOM RADIUS (m)		2.0	4.0	5.0	6.0	7.0	8.0	9.0	10.0	11.0	12.0	13.0	15.0	16.0	17.0	18.0	19.0	20.0	
ALL	(kg)	7600	4470	3200 (4.7m)															
2ND	(kg)	6480	3640	3010	2580	2190	1570 (7.8m)												
3RD	(kg)	5170 (2.5m)	3390	2810	2400	2080	1830	1610	1400	1020 (10.8m)									
4TH	(kg)		2400	2270	1960	1740	1540	1390	1260	1160	1000	720 (13.9m)							
5TH	(kg)		2400	2180	1890	1650	1480	1330	1210	1100	1010	820	720	530 (16.9m)					
6TH	(kg)		2400	2100	1820	1590	1420	1280	1170	1060	970	830	760	660	590	520	400		



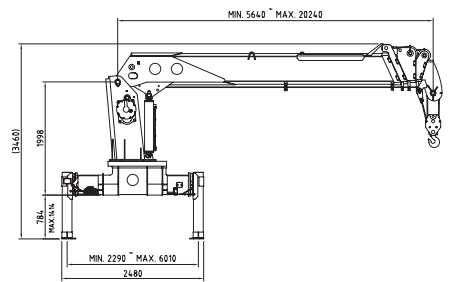
Heavy Duty #1

DESCRIPTION	UNITS	CSS 300	CSS 300 SUPER	CSS 350
Lifting Capacity	ton-meter	29.0	27.6	31.0
Lifting Capacity / Outreach	kg/m	11300 / 2.0	10000 / 2.0	12000 / 2.0
		5450 / 4.8	4540 / 5.4	4900 / 6.0
		4290 / 6.0	2830 / 8.0	3390 / 8.0
		2000 / 12.0	1240 / 15.0	1540 / 15.0
		1100 / 17.2	620 / 20.0	500 / 25.2
Working Radius	m	17.2	20.0	25.2
Max. Working Height	m	20.0	22.8	28.0
Rated Oil Flow, Recommended	cc / rev	90 / 90		
Working Pressure	kg / cm ²	200 / 200		225 / 200
Oil Tank Capacity	ℓ	200		
Shape Of Boom		Hexagonal box construction, 5 sections	Hexagonal box construction, 5 sections	Hexagonal box construction, 6 sections
Boom Length	m	Min. 5.1, Max. 17.5	Min. 5.6, Max. 20.2	Min. 6.3, Max. 25.5
Boom Extending Speed	m / sec	12.4 / 30	14.6 / 35	19.2 / 54
Boom Raising Speed	° / sec	0~80 / 25		
Slewing Angle	°	360° continuous		
Slewing Speed	r.p.m.	2.0		
Wire Rope	ø x m	12.5 x 80		12.5 x 100
Hook Speed	m / min	15 (4 fall lines)		
Winch Type		Hyd. motor driven, spur gear speed reduction with hydraulic brake		
Single Line Pull	ton	2.5		
Slewing Reduction Gear Type		Hyd. motor driven, combined type of planetary gear and worm gear speed reduction with hydraulic brake		
Outrigger Span, Main	Ext	m		
	Ret	m		
Truck chassis, Recommended	GVW(ton)	25		
Optional feature		(1) Rear outrigger system (2) Additional winch system of 2.5 ton / 3.0 ton / 3.5 ton (3) Additional manual Jib Boom of 4.0 meters or more (4) AML(Auto Moment Limiter) system (5) Top Seat Control (6) Several options if customers request for their comfortable and safe work (7) Hydraulic Pump		

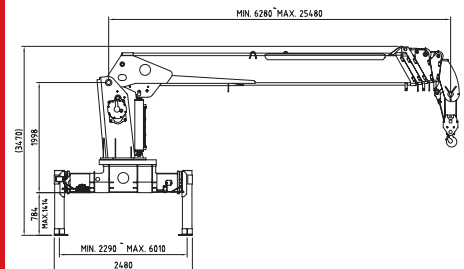
CSS 300








CSS 300 SUPER

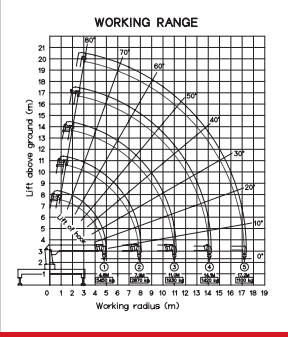







CSS 350



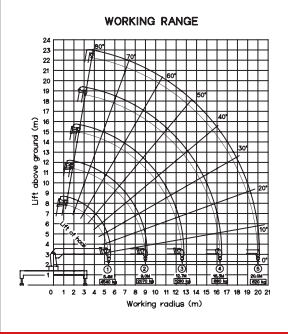
CSS300 TYPE RATED LOADS																
BOOM RADIUS (m)	2.0	3.0	4.0	5.0	8.0	10.0	11.0	14.0	15.0	18.0	20.0	21.0	22.0	23.0	24.0	25.0
ALL 	(kg) 11300	8790	7130	5450 (4.8m)												
2ND 	(kg) 10000	7350	5870	4950 (7.9m)												
3RD 	(kg) 7970 (2.5m)	6760	5430	4470	3080	2480	1930									
4TH 	(kg)	3360	3360	3360	2880	2380	2190	1580	1420 (14.1m)							
5TH 	(kg)		2700	2700	2700	2240	2070	1650	1540	1100 (17.2m)						







CSS 300



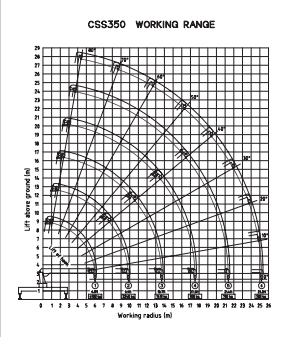
CSS300 SUPER TYPE RATED LOADS																
BOOM RADIUS (m)	2.0	3.0	4.0	5.0	6.0	9.0	12.0	13.0	15.0	17.0	20.0	21.0	22.0	23.0	24.0	25.0
ALL 	(kg) 10000	8090	6680	5500	4540 (5.4m)											
2ND 	(kg) 9410	6680	5270	4350	3720	2070										
3RD 	(kg)	5000	4910	4010	3400	2330	1650	1290 (12.7m)								
4TH 	(kg)		4690	3860	3220	2200	1650	1500	1240	880 (16.3m)						
5TH 	(kg)			3710	3120	2090	1560	1430	1220	1040	620					

CSS 300 SUPER



CSS350 TYPE RATED LOADS																
BOOM RADIUS (m)	2.0	3.0	4.0	5.0	6.0	10.0	12.0	14.0	15.0	18.0	20.0	21.0	22.0	23.0	24.0	25.0
ALL 	(kg) 12000	9720	7810	6620	4900											
2ND 	(kg) 10000	8060	6320	5180	4450	2240 (9.9m)										
3RD 	(kg) 8490 (2.6m)	7570	5810	4840	4110	2530	2070	1410 (13.7m)								
4TH 	(kg)		3000	3000	3000	2390	1980	1670	1540	980 (17.5m)						
5TH 	(kg)			3000	3000	2280	1890	1600	1490	1190	1000	850	700 (21.4m)			
6TH 	(kg)				3000	2200	1820	1540	1420	1150	1000	930	860	800	720	500 (25.2m)

CSS 350

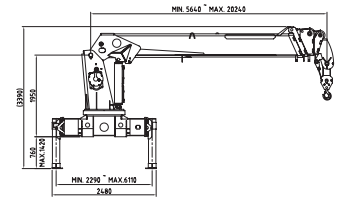


Heavy Duty #2

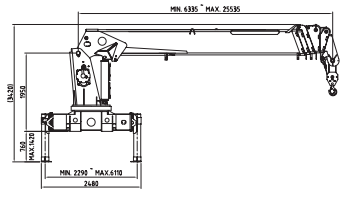
Extra Heavy Duty

DESCRIPTION	UNITS	CSS 500	CSS 600	CSS 700	CSS 900	CSS 1100
Lifting Capacity	ton-meter	42.0	45.0	55.7	64.0	75.7
Lifting Capacity / Outreach	kg/m	14700 / 2.0	14200 / 2.0	19000 / 2.0	21000 / 2.0	23000 / 2.0
		7780 / 5.3	7170 / 6.0	9280 / 6.0	8610 / 7.0	9250 / 7.8
		4720 / 8.0	3590 / 10.0	4720 / 10.0	4180 / 11.6	4370 / 13.0
		2330 / 15.0	2140 / 15.0	2780 / 15.0	2710 / 16.2	2450 / 18.2
		1600 / 20.0	1000 / 25.2	1050 / 27.0	1050 / 30.0	1050 / 33.6
Working Radius	m	20.0	25.2	27.0	30.0	33.6
Max Working Height	m	22.8	28.0	29.8	33.0	36.6
Rated Oil Flow, Recommended	cc / rev		90 / 90		90 / 90	
Working Pressure	kg / cm ²	200 / 200	220 / 200	210 / 200	195 / 230	180 / 210
Oil Tank Capacity	ℓ		200		250	275
Shape Of Boom		Hexagonal box construction, 5sections	Hexagonal box construction, 6sections	Hexagonal box construction, 6sections	Hexagonal box construction, 6sections	Hexagonal box construction, 6sections
Boom Length	m	Min. 5.6, Max. 20.2	Min. 6.3, Max. 25.5	Min. 6.8, Max. 27.3	Min. 7.33, Max. 30.53	Min. 8.3, Max. 34.0
Boom Extending Speed	m / sec	14.6 / 35	19.2 / 60	20.5 / 60	23.0 / 65	25.7 / 91
Boom Raising Speed	° / sec	0~80 / 25		-10~80 / 30	-9~80 / 30	-9~80 / 43
Slewing Angle	°	360° continuous		360° continuous		
Slewing Speed	r.p.m.	1.5		1.0	1.0	1.5
Wire Rope	ø x m	14.0 x 100			16.0 x 120	16.0 x 140
Hook Speed	m / min	15 (4 fall lines)		100/50 (1fall line)	100/60 (1fall line)	147/49 (1fall line)
Winch Type		Hyd. motor driven, spur gear speed-reduction with hydraulic brake		2 speed winch, hyd. motor driven, planetary gear speed reduction with hyd. brake	2 speed winch, hyd. motor driven, planetary gear speed reduction with hyd. brake	
Single Line Pull	ton	3.0			3.5	4.0
Slewing Reduction Gear Type		Hyd. motor driven, combined type of planetary gear and worm gear speed reduction with hydraulic brake			Hyd. motor drive, combined type of planetary gear and worm gear speed reduction with hyd. brake	Hyd. motor driven, planetary gear speed reduction with hyd. brake
Outrigger Span, Main	Ext m	6.11		6.91	7.11	7.73
	Ret m	2.29			2.29	2.30
Truck chassis, Recommended	GVW(ton)	30			39	45
Optional feature	(1) Rear outrigger system (2) Additional winch system of 3.0 ton / 3.5 ton / 4.0 ton (Extra Heavy Duty only) (3) Additional manual Jib Boom of 4.0 meters or more (4) AML(Auto Moment Limiter) system (5) Top Seal Control (6) Several options if customers request for their comfortable and safe work (7) Hydraulic Pump					

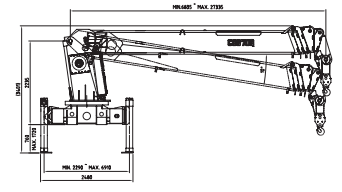
CSS 500



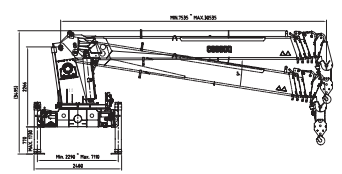
CSS 600



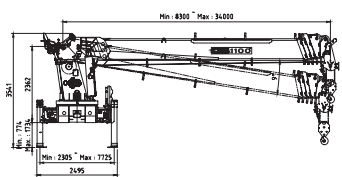
CSS 700








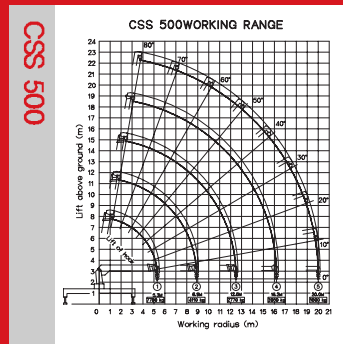
CSS 900









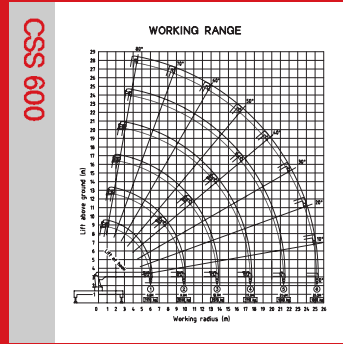
CSS 1100









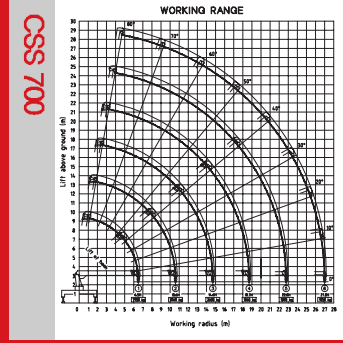
CSS500 TYPE RATED LOADS																
BOOM RADIUS (m)	2.0	3.0	4.0	5.0	6.0	9.0	13.0	14.0	15.0	17.0	19.0	20.0	21.0	22.0	23.0	24.0
ALL 	(kg)	14700	11420	9680	8510	7780 (5.3m)										
2ND 	(kg)	12440	9250	7500	6450	5710	4110 (8.9m)									
3RD 	(kg)			6830	5750	5020	3760	2770 (12.6m)								
4TH 	(kg)			5000	5000	4700	3410	2610	2460	2330	2050 (16.2m)					
5TH 	(kg)			5000 (4.6m)	4950	4400	3130	2390	2250	2130	1940	1760	1600			









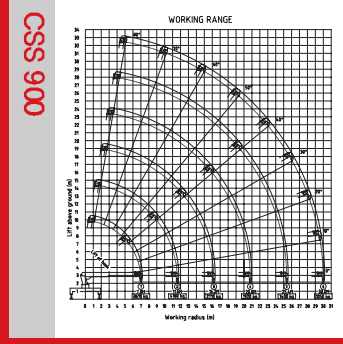
CSS600 TYPE RATED LOADS																	
BOOM RADIUS (m)	2.0	3.0	4.0	5.0	6.0	10.0	12.0	14.0	15.0	18.0	20.0	21.0	22.0	23.0	24.0	25.0	
ALL 	(kg)	14200	11100	9730	8460	7170											
2ND 	(kg)	12300	9430	7500	6400	5540	3590 (9.9m)										
3RD 	(kg)	9880 (2.6m)	8860	6910	5750	4980	3320	2860	2370 (13.7m)								
4TH 	(kg)			5000	5000	4660	3020	2590	2270	2140	1710 (17.5m)						
5TH 	(kg)				5000	4460	2830	2400	2090	1960	1670	1500	1390	1280 (21.4m)			
6TH 	(kg)					4310	2740	2260	1960	1830	1540	1390	1320	1260	1200	1140	1000 (25.2m)









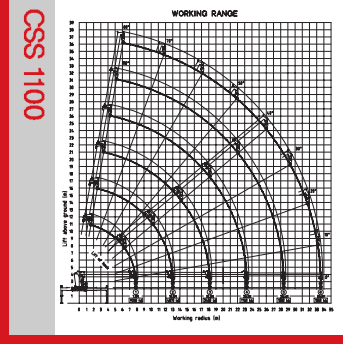
CSS700 TYPE RATED LOADS																	
BOOM RADIUS (m)	2.0	3.0	4.0	5.0	6.0	10.0	12.0	14.0	15.0	18.0	20.0	21.0	23.0	24.0	26.0	27.0	
ALL 	(kg)	19000	15100	12340	10670	9280	7930 (6.5m)										
2ND 	(kg)	15890	12380	9800	8260	7240	4720	3960 (10.6m)									
3RD 	(kg)		11280	8910	8120	6500	4380	3690	3100		2600 (14.6m)						
4TH 	(kg)		11400	8570	6800	6180	3930	3400	2940	2780	2230	1860 (16.7m)					
5TH 	(kg)				5000	5000	3640	3100	2750	2600	2170	1940	1810	1390 (22.8m)			
6TH 	(kg)					5000	3420	2970	2660	2400	2000	1800	1750	1570	1490	1290	1050



CSS900 TYPE RATED LOADS																	
BOOM RADIUS (m)	2.0	3.0	4.0	5.0	6.0	10.0	12.0	14.0	16.0	18.0	20.0	22.0	24.0	26.0	28.0	30.0	
ALL 	(kg)	21000	16000	13360	11650	10400	8610 (7.0m)										
2ND 	(kg)		13100	10570	8920	7780	5270	4180 (11.6m)									
3RD 	(kg)		12300	9810	8170	7040	4640	4000	3500		2710 (16.2m)						
4TH 	(kg)			9400	7770	6660	4280	3650	3190	2830	2560	1920 (20.8m)					
5TH 	(kg)				5000	5000	4030	3410	2970	2610	2340	2110	1910	1710	1400 (25.4m)		
6TH 	(kg)					5000	3780	3240	2800	2450	2180	1960	1780	1540	1470	1330	1050



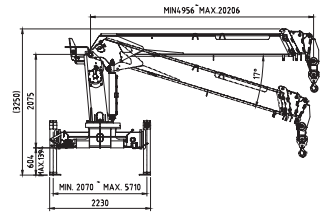
CSS1100 TYPE RATED LOADS																		
BOOM RADIUS (m)	2.0	3.0	4.0	5.0	6.0	10.0	12.0	14.0	16.0	19.0	21.0	24.0	26.0	29.0	32.0	34.0		
ALL 	(kg)	23000	18000	14750	12850	11550	9250 (7.8m)											
2ND 	(kg)		14500	11600	9770	8490	5790	5030	4370 (13.0m)									
3RD 	(kg)		13000	10450	8620	7350	4690	4000	3480	3080		2450 (18.2m)						
4TH 	(kg)				4220	4220	4220	3760	3260	2880	2440	2210	1750 (23.3m)					
5TH 	(kg)					4220	4220	3600	3110	2730	2300	2080	1810	1660	1300 (28.4m)			
6TH 	(kg)						4220	3800	3480	3000	2620	2190	1980	1720	1580	1390	1220	1050 (33.6m)



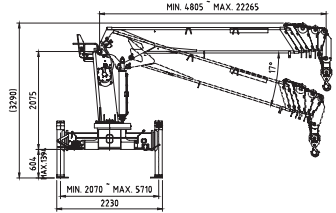
Special Duty

DESCRIPTION	UNITS	CSS 196M	CSS 197M	CSS 207S	CSS 560	CSS 660M
Lifting Capacity	ton-meter	18,2	18,2	19,6	36,8	45,0
Lifting Capacity / Outreach	kg/m	7000 / 2.0	7000 / 2.0	7340 / 2.0	12000 / 2.0	14200 / 2.0
		2540 / 6.0	2400 / 6.0	2900 / 6.0	5900 / 6.0	7170 / 6.0
		1120 / 12.0	1000 / 12.0	1070 / 12.0	3640 / 8.0	4510 / 8.0
		630 / 18.0	510 / 18.0	520 / 18.0	1690 / 15.0	2140 / 15.0
		430 / 20.0	270 / 22.1	300 / 22.0	740 / 25.2	1000 / 25.2
Working Radius	m	20.0	22.1	22.0	25.2	25.2
Max. Working Height	m	23.0	25.1	25.0	28.2	28.2
Rated Oil Flow, Recommended	cc / rev	61			90 / 90	
Working Pressure	kg / cm ²	195		180	200 / 200	220 / 200
Oil Tank Capacity	ℓ	145			200	
Shape Of Boom		Hexagonal box construction, 6sections	Hexagonal box construction, 7sections	Hexagonal box construction, 7sections	Hexagonal box construction, 6sections	Hexagonal box construction, 6sections
Boom Length	m	Min. 4.95, Max. 20.2	Min. 4.8, Max. 22.26	Min. 4.91, Max. 22.37	Min. 6.28, Max. 25.48	Min. 6.39, Max. 25.59
Boom Extending Speed	m / sec	15.25 / 35	17.46 / 40	17.46 / 40	19.2 / 54	19.2 / 60
Boom Raising Speed	° / sec	-17.0~80 / 15		-17.2~80 / 18	-13.3~80 / 30	-11.0~80 / 30
Slewing Angle	°	360° continuous				
Slewing Speed	r.p.m.	2.5		2.0	1.5	1.0
Wire Rope	∅ x m	10 x 100	10 x 120	11.2 x 120	14 x 100	14 x 100
Hook Speed	m / min	15 (4fall line)			100 / 50 (1fall line)	
Winch Type		Hyd. motor driven, spur gear speed reduction with mechanical brake			2 speed winch, hydraulic motor driven, planetary gear reduction with hydraulic brake	
Single Line Pull	ton	1.5	1.5	2.0	3.0	
Slewing Reduction Gear Type		Hyd. motor driven, worm gear speed reduction with hydraulic brake			Hyd. motor driven, combined type of planetary gear and worm gear speed reduction with hydraulic brake	
Outrigger Span, Main	Ext	m		5.71	6.01	6.91
	Ret	m		2.07	2.29	2.29
Truck chassis, Recommended	GVW(ton)	15			25	30
Optional feature	(1) Rear outrigger system (2) Additional winch system of 1.5 ton (7 ton grade) / 2.5 ton / 3.0 ton / 3.5 ton (12 ton and 14 ton) (3) Additional manual Jib Boom of 3.0 meters or more (4) AML(Auto Moment Limiter) system (5) Cabin (6) Several options if customers request for their comfortable and safe work (7) Hydraulic Pump					

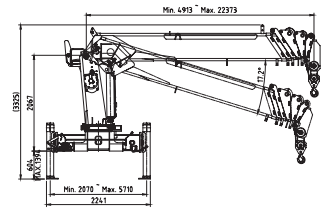
CSS 196M



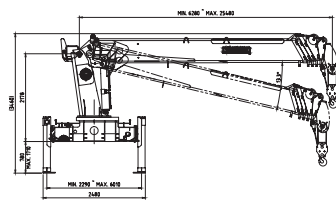
CSS 197M



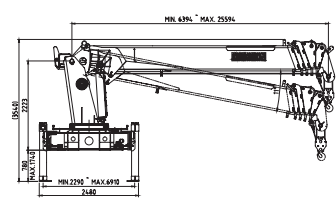
CSS 207S



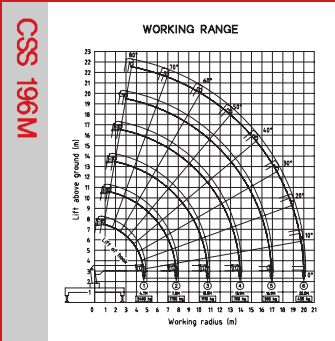
CSS 560










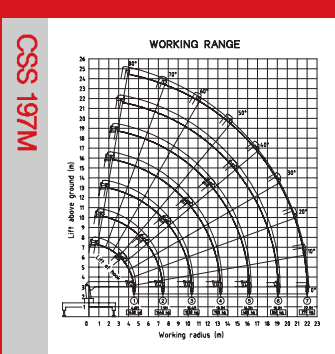
CSS 660M










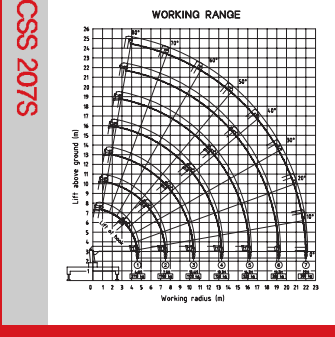
CSS196M TYPE RATED LOADS																
BOOM RADIUS (m)	2.0	4.0	5.0	6.0	7.0	8.0	9.0	10.0	12.0	13.0	14.0	15.0	16.0	17.0	18.0	20.0
ALL  (kg)	7000	4500	3480 (4.7m)													
2ND  (kg)	7000	3510	2980	2540	2180	1700 (7.8m)										
3RD  (kg)	4810 (2.5m)	3250	2670	2250	2000	1790	1600	1420	1110 (10.8m)							
4TH  (kg)		3000	2500	2130	1850	1650	1490	1350	1120	1010	780 (13.9m)					
5TH  (kg)		2400	2370	2030	1760	1520	1390	1260	1060	980	900	830	750	580 (16.9m)		
6TH  (kg)		2400	2310	1950	1680	1490	1310	1190	1000	920	860	790	740	680	630	430





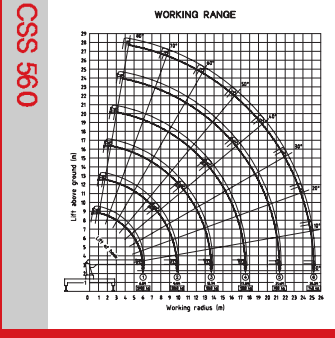
CSS197M TYPE RATED LOADS																
BOOM RADIUS (m)	2.0	4.0	5.0	7.0	8.0	10.0	12.0	13.0	14.0	15.0	16.0	17.0	19.0	20.0	21.0	22.0
ALL  (kg)	7000	4320	3430 (4.6m)													
2ND  (kg)	5850	3370	2840	2030	1640 (7.5m)											
3RD  (kg)	4760 (2.4m)	3040	2510	1870	1650	1260	1030 (10.4m)									
4TH  (kg)		2100	2100	1730	1510	1220	1000	830	700 (13.3m)							
5TH  (kg)			2100	1610	1410	1100	920	840	760	680	590	480 (16.2m)				
6TH  (kg)			2100	1550	1370	1080	890	810	750	680	630	570	410	360 (19.1m)		
7TH  (kg)			2100 (4.4m)	1510	1320	1050	850	770	700	660	610	560	470	430	370	270 (22.1m)





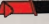



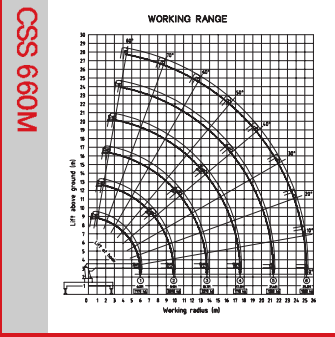
CSS207S TYPE RATED LOADS																
BOOM RADIUS (m)	2.0	4.0	5.0	7.0	8.0	10.0	12.0	13.0	14.0	15.0	16.0	17.0	19.0	20.0	21.0	22.0
ALL  (kg)	7340	4580	3710 (4.6m)													
2ND  (kg)	5920	3430	2910	2170	1780 (7.5m)											
3RD  (kg)	5520	3100	2570	1930	1710	1340	1120 (10.4m)									
4TH  (kg)		2100	2100	1750	1550	1250	1070	890	750 (13.3m)							
5TH  (kg)			2100	1630	1430	1150	950	860	790	710	610	520 (16.2m)				
6TH  (kg)			2100	1570	1370	1090	890	820	750	690	630	580	440	380 (19.2m)		
7TH  (kg)			2100	1520	1330	1050	860	780	720	660	610	560	470	430	390	300



CSS560 TYPE RATED LOADS																
BOOM RADIUS (m)	2.0	3.0	4.0	5.0	6.0	8.0	10.0	12.0	14.0	15.0	16.0	18.0	20.0	22.0	24.0	25.0
ALL  (kg)		9560	7920	7040	5900											
2ND  (kg)		7560	6070	5120	4480	3640	2860 (9.9m)									
3RD  (kg)		7020	5520	4600	3970	3150	2640	2280	1860 (13.7m)							
4TH  (kg)			3000	3000	3000	2890	2390	2050	1800	1690	1590	1330 (17.5m)				
5TH  (kg)				3000	3000	2720	2220	1890	1640	1550	1460	1300	1160	980 (21.4m)		
6TH  (kg)				3000	3000	2600	2100	1770	1530	1430	1350	1200	1080	980	870	740 (25.2m)



CSS660M TYPE RATED LOADS																
BOOM RADIUS (m)	2.0	3.0	4.0	5.0	6.0	8.0	10.0	12.0	14.0	15.0	16.0	18.0	20.0	22.0	24.0	25.0
ALL  (kg)		10000	9730	8460	7170											
2ND  (kg)		9430	7500	6400	5540	4510	3590 (9.9m)									
3RD  (kg)		8860	6910	5750	4980	3950	3320	2860	2370 (13.7m)							
4TH  (kg)			3000	3000	3000	3000	3000	2590	2270	2140	2020	1710 (17.5m)				
5TH  (kg)				3000	3000	3000	2830	2400	2090	1960	1860	1670	1500	1280 (21.4m)		
6TH  (kg)				3000	3000	3000	2740	2260	1960	1830	1720	1540	1390	1260	1140	1000 (25.2m)





 CS MACHINERY CO., LTD.

Head Office / Cheongwon Factory

Address : 109-8 Jangjaegeumdae-ro, Buk-e, Cheongwon, Cheongju, Chungbuk, Korea

Former address : 228-6 Keum-am, Buk-e, Cheongwon, Chungbuk, Korea

Tel : +82-43-211-6003 Fax : +82-43-211-7003

Homepage : www.csmltd.co.kr

Email : csmltd@csmltd.co.kr / CSMLTD@hitel.net

Daegu Factory

Address : 43, Secheon-ro 7-gil, Dasa, Dalseong, Daegu, Korea

Tel : +82-53-591-7117 Fax : +82-53-591-7118

